

Unichrome[®] Associates

Dealers in all types of laboratory equipments & consumables

HPLC Column

GC Columns

D2 Lamps

E1 & E2 Weights

HPLC & GC Consumables

HPLC & GC Syringes

UV Quartz Cell

Safety Product

Dissolutions Consumables



Unichrome[®] Associates

Dealers in all types of laboratory equipments & consumables



Safety Specialist

SCAT Europe GmbH (Germany)
Safety Products



MACHEREY-NAGEL

MACHEREY-NAGEL (Germany)

HPLC & GC Columns, SPE Cartridges,
Automatic Crimpers & Decrimpers



VICI Jour[®]

VICI AG International (Switzerland)
Peek Tubings, Suction Filters



Hellma[®]

Precision in Spectro-Optics Worldwide.

Hellma GmbH & Co. KG (Germany)
UV Quartz



Unichrome[®] Associates

Dealers in all types of laboratory equipments & consumables

Nylon

- High mechanical and tensile strength.
- Universal application for analytical procedures.
- Two types in pore size: 0.22 μ m and 0.45 μ m.
- Three types in filter size: 13mm, 25mm and 33mm.



Typical data

Material	Nylon	
Material of housing	pp	
Effective filtration area(cm ²)	13mm/1.13cm ²	25mm/4.15cm ²
Pore size(μ m)	0.22/0.45	
Process volume(ml)	<10ml(13mm)	<100ml(25mm)
Maximum Operating Temperature	100°C	
Maximum Operating Pressure(psi)	87psi	

PVDF Hydrophobic

- Filtration of water-soluble oligomers and polymers, e.g. protein solutions.
- Filtration of hydrophobic substances in different organic solvents.
- Two types in pore size: 0.22 μ m and 0.45 μ m.
- Three types in filter size: 13mm, 25mm and 33mm.



Typical data

Material	PVDF Hydrophobic	
Material of housing	PP	
Effective filtration area(cm ²)	13mm/1.13cm ²	25mm/4.15cm ²
Pore size(μ m)	0.22/0.45	
Process volume(ml)	<10ml(13mm)	<100ml(25mm)
Maximum Operating Temperature	100°C	
Maximum Operating Pressure(psi)	87psi	

PTFE Hydrophobic

- Hydrophobic PTFE syringe filters have broad chemical compatibility and high pH resistance.
- Versatile filters for use with aggressive organic solvent-based solutions and are especially ideal for HPLC sample preparation.
- Two types in pore size: 0.22 μ m and 0.45 μ m.
- Three types in filter size: 13mm, 25mm and 33mm .



Typical data

Material	PTFE Hydrophobic	
Material of housing	pp	
Effective filtration area(cm ²)	13mm/1.13cm ²	25mm/4.15cm ²
Pore size(μ m)	0.22/0.45	
Process volume(ml)	<10ml(13mm)	<100ml(25mm)
Maximum Operating Temperature	130°C	
Maximum Operating Pressure(psi)	87psi	

Unichrome[®] Associates

Dealers in all types of laboratory equipments & consumables

VICI Jour[®]

VICI AG International (Switzerland)

Last Drop mobile phase filters

No loss of mobile phase
Biocompatible PTFE frits or stainless steel frits
Three porosity options
Two connector types: stepped tubing and 1/4-28 fitting



Stainless Steel Tubing Cutter - Cutting Wheel Type

For 1/16" and 1/8" SS tubing.
Leaves smooth, uniform cuts.
Minimal deburring and/or reaming required.
Easy replacement of the cutting wheel.
This is the ideal tool for cutting 1/16" and 1/8" stainless steel tubing, leaving smooth, uniform cuts requiring a minimum of deburring and/or reaming.



Solid color-coded PEEK tubings

Color-coding identifies the ID of your PEEK tubing - each ID is coded with a different color. Solid colored tubing is made of pre-dyed raw material. All colorants used in the manufacture of this tubing are RoHS-compliant. (Restriction of Hazardous Substances)



PEEK one-piece fingertight fitting

- | | |
|-------------------------------|--|
| SPECS | • Fingertight up to 350 bar (5000 psi) |
| • For 1/16" OD tubing | • Excellent chemical and mechanical properties |
| • Material PEEK | • One-piece-no ferrule required |
| • 10-32 threads | • Biocompatible |
| • Tolerance: ±0.05 mm (.002") | |
- Our PEEK fingertight fittings are available in six colors for easy identification of tubing lines. They are rated to 350 bar (psi) and can be used in virtual any type of 10-32 thread HPLC fitting detail on the market



Clean-Cut tubing cutter

- Cuts PEEK, PTFE, ETFE and other polymeric tubing
- No distortion to OD or ID
- Ideal for the most demanding LC applications
- Safety lock secures the blade

Right angles and clean cuts are essential in LC to avoid leaks and dead volume. This handy tool makes it easy to get burn-free perpendicular ends on polymeric tubing without distorting the outside diameter and/or closing the inside diameter of the tubing.

It is designed to cut PTFE, ETFE and polymers in general and PEEK capillary tubing in particular. The compact design and unique safety locking mechanism allow every chromatographer to keep one in their pocket



Unichrome[®] Associates

Dealers in all types of laboratory equipments & consumables

VICI Jour[®]

VICI AG International (Switzerland)

Column End Plugs

- Seal analytical columns
- One size fits all
- Fingertight, with wrench flats as well

Fingertight column end plugs fit all columns with 10-32 threads.

Easy handling is guaranteed by an additional 5/16" wrench flat, which allows the plug to be loosened by a wrench if it gets stuck. The long design and threading down to the ferrule ensure safe closing of valuable columns.



One-Piece Fingertight Column Couplers

- Self-adjusting - zero dead volume for all fitting types
- Four bore sizes
- Biocompatible

A unique feature of this column coupler is that it adapts automatically to fit all pilot lengths - Valco, Waters, Upchurch, Rheodyne, etc. Since the tubing bottoms out in any fitting detail, added void volume is minimal.



PEEK One-Piece Fingertight UHPLC Fittings

- Fingertight up to 500 bar (7250 psi)
- Excellent chemical and mechanical properties
- One-piece - no ferrule required
- Biocompatible

For any 10-32 thread fitting on the market

Our PEEK-HT fingertight fittings are rated to 500 bar (7250 psi) as fingertights.

Pressures up to 1000 bars (14,500 psi) can be accomplished turning the fingertightened fitting an additional 1/2 - 3/4 turn (180° - 270°) with a 5/16" wrench like JR-800 or JR-804.



PEEK One-Piece Fingertight UHPLC Fittings

- Fit all Rheodyne® valves
- Special loops for valve Model 7725
- Wide range of volumes available
- High pressure resistance, low permeability

VICI Jour stainless steel sample loops are made of high quality SS316.

They are cut using an electrolytic cutting process, cleaned with ultrasound and high pressure steam to remove contaminants, dried, and capped with softener-free caps to avoid recontamination of the tubing. All loops are supplied with stainless hex-head nuts and stainless ferrules for reliable connections.



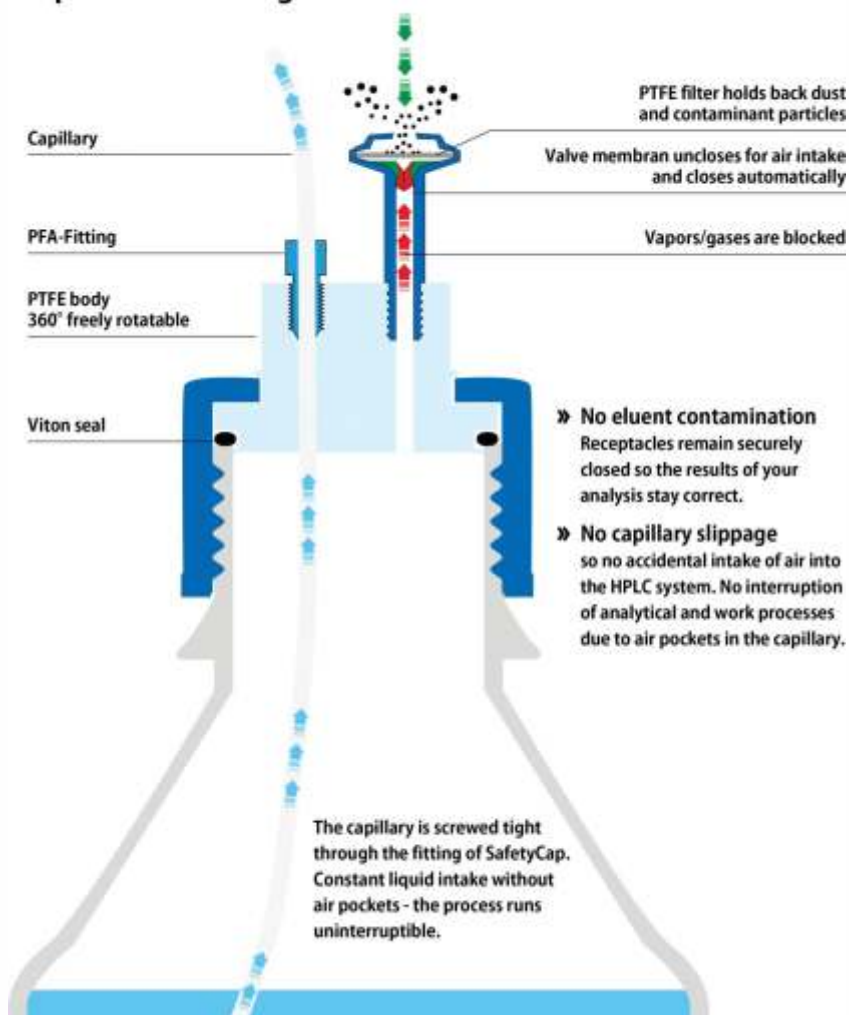
Unichrome[®] Associates

Dealers in all types of laboratory equipments & consumables



SAFETYCAP for HPLC

The air valve ensures pressure equalisation during the extraction



Unichrome[®] Associates

Dealers in all types of laboratory equipments & consumables



AGT Agela Technologies

Unisphere HPLC columns

Excellent Performance-to-cost Value

- ◆ Double End-cap, Good Inertness
- ◆ Good Stability and Reproducibility
- ◆ Excellent Performance-to-cost Value

Technical Parameters:

High-purity silica, Metal Impurity < 10ppm
Average Particle Size : 5µm
Specific Surface: 320m²/g
Pore Size: 100Å
Carbon Loading: 18%
pH Range: 1.5-9.0
Efficiency: >80,000/m
TF: 0.98-1.20



Unisphere HPLC columns

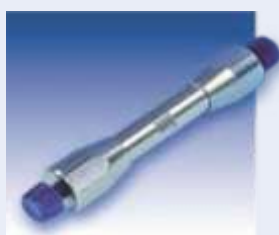
Using the silica of high-purity and high mechanical strength, the Unisphere C18s are made with high purity monosilane through Agela Technologies well controlled bonding process. They have surface bonding coverage and completely capped. The carbon content is as much as 18%. They have excellent tolerance of chemical and long time. They are the best choice of high performance-to-cost value.

Unichrome[®] Associates

Dealers in all types of laboratory equipments & consumables

Chromatography

Columns and supplies catalog



HPLC



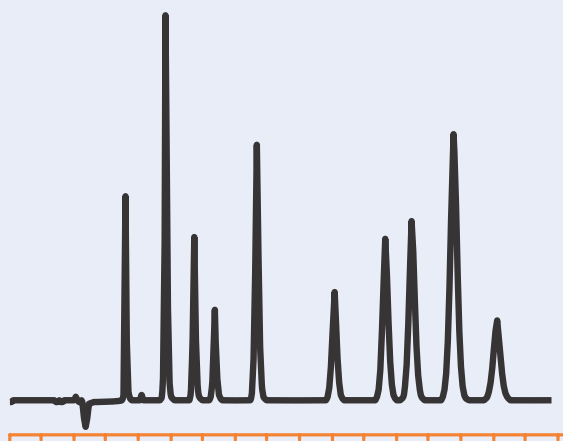
GC



SPE and Flash



Crimper & Decrimper



... we Meet your Needs

MACHERY-NAGEL

www.mn-net.com



Unichrome[®] Associates

Dealers in all types of laboratory equipments & consumables

SETonic

Setonic GmbH (Germany)

Tecan XP Syringes
Replacement syringe
for Tecan pump
Front Fitting: 1/4"-28UNF



Tecan XE Syringes
Replacement syringes for Tecan
syringe pump



Tecan XLP Syringes
Replacement syringes
for Tecan syringe pump
Front Fitting: 1/4"-28UNF



GC PAL, CombiPAL



Agilent 7673



Unichrome[®] Associates

Dealers in all types of laboratory equipments & consumables



Home Online shop Product Program Test Tool Monitoring and Service Company Contact General Terms and Conditions



HÄFNER – Weights and Weight sets

Our company has been producing weights for various applications since our establishment in 1933.

Häfner is certified in accordance with ISO 9001:2015 and is a specialist for weights and weight sets.

Häfner Gewichte delivers worldwide and is renowned for its reliability and precision.

Standard weights E0, E1, E2

High precision weights F1, F2

Precision Weights and Commercial Weights M1, M2, M3

Accessories for Test Weights

Boxes and Service Cases

Selection Program for Test Weights - Maximum Tolerance according to OIML

Maximum tolerance according to OIML R111



Unichrome[®] Associates

Dealers in all types of laboratory equipments & consumables



Pharmaceutical
Reference standards

Mikromol[™]



Over
5,000
pharmaceutical
reference
standards



QUALITY | ISO 9001 | ISO/IEC 17025 |
ISO GUIDE 34 GMP/GLP | ISO 13485 |
ISO/IEC 17043

Unichrome[®] Associates

Dealers in all types of laboratory equipments & consumables

Solid Phase Extraction System



Introduction:

The solid phase extraction system is a negative pressure solid phase extraction device. It uses a solid adsorbent to adsorb the target compound in a liquid sample, separates it from the sample matrix and interfering compounds, and then eluates it with an eluent or heats to desorb it to achieve separation and Purpose of enrichment of target compounds (I.e. the separation, purification and enrichment of the sample), the solid phase extraction instrument aims to reduce the interference of the sample matrix and improve the detection sensitivity.

PP PFA Volumetric Flask for ION CHROMATOGRAPHY



Unichrome[®] Associates

Dealers in all types of laboratory equipments & consumables



Lab Consumable Scales & Balances Accessories



Unichrome[®] Associates

Dealers in all types of laboratory equipments & consumables



D2 LAMPS



- Long Life
- Certified
- Warranty 2000 hrs.
- D2 Lamp for Agilent VWD & DAD
- HP 1100, 1200, 1260, 1290



- Long Life
- Certified
- Warranty 2000 hrs.
- D2 Lamp for Shimadzu UV & PDA
- LC2010



- Long Life
- Certified
- Warranty 2000 hrs.
- D2 Lamp for Waters UV & PDA
- 2487 & 2996



- Long Life
- Certified
- Warranty 1000 hrs.
- D2 Lamp for Shimadzu Spectrophotometer UV 160, 1601, 1700, 1800.

Unichrome[®] Associates

Dealers in all types of laboratory equipments & consumables

EPA/TOC Vials & Closures

- If you are doing any sampling, testing, or validation, you need to make sure the results were not skewed by a contaminant that may have come from the container.
- GORJEST offers a range of certified EPA Screw Vial Convenience Kits which are suitable on all TOC manufacturer's instruments, including Sievers, Shimadzu, OI Analytical, and Teledyne-Tekmar.
- All Certified to contain <10ppb Carbon, giving you confidence in the quality of your TOC measurements.
- Teflon lined caps and protective dust covers.
- Superior vial-to-vial consistency.
- Capped with teflon lined silicone septa and dust cover.
- Widely apply to air, water, soil analysis test, also pesticide residue, pharmaceutical manufacturing and forensic test.

> EPA/TOC



20mL 27.5x57mm
Clear Glass EPA/TOC Vial
24-400 White Open Top PP Screw Cap
with 22mm Natural PTFE/White Silicone
3.0mm thick Septa (EPA Quality).

Description



20mL 27.5x57mm
Amber Glass EPA/TOC Vial
24-400 White Open Top PP Screw Cap
with 22mm Natural PTFE/White Silicone
3.0mm thick Septa (EPA Quality).



20mL 27.5x57mm
Clear/Amber Glass EPA/TOC Vial
24-400 White Open Top PP Screw Cap
with 22mm Natural PTFE/White Silicone
3.0mm thick Septa (EPA Quality) and Dust Cover.



40mL 27.5x95mm
Clear Glass EPA/TOC Vial
24-400 White Open Top PP Screw Cap
with 22mm Natural PTFE/White Silicone
3.0mm thick Septa (EPA Quality).

Description



40mL 27.5x95mm
Amber Glass EPA/TOC Vial
24-400 White Open Top PP Screw Cap
with 22mm Natural PTFE/White Silicone
3.0mm thick Septa (EPA Quality).



40mL 27.5x95mm
Clear/Amber Glass EPA/TOC Vial
24-400 White Open Top PP Screw Cap
with 22mm Natural PTFE/White Silicone
3.0mm thick Septa (EPA Quality) and Dust Cover.

Unichrome[®] Associates

Dealers in all types of laboratory equipments & consumables

Barcoded Vial

- No more smudges no more smears, Better data for your peers.
- One vial, one code. No duplicate barcodes. You can track every individual vial in system.
- Each barcode scanned for 100% readability.
- Customized service is workable as request, like QR code, Datamatrix (2D) type to choose.
- Will not contaminate the samples in anyway.
- The printings on vials are fired on the glass, which makes the printings.
- Can resist all common solutions in laboratories.
- Barcoded vials are annealing after over 500°C, perfect with printing durability and vial inner cleanness.



Description
Barcoded
2mL Clear Glass
12x32mm Flat Base
9-425 Screw Thread Vial.



Description
QR Coded
2mL Clear Glass
12x32mm Flat Base
9-425 Screw Thread Vial.



Description
Barcoded
2mL Amber Glass
12x32mm Flat Base
9-425 Screw Thread Vial.



Description
QR Coded
2mL Amber Glass
12x32mm Flat Base
9-425 Screw Thread Vial.



Description
Barcoded
4mL Clear Glass
15x45mm Flat Base
13-425 Screw Thread Vial.



Description
Barcoded
4mL Amber Glass
15x45mm Flat Base
13-425 Screw Thread Vial.



Description
Barcode
40mL Clear Glass Sample Vial
27.5x95mm
24-400 Screw Thread.



Description
Barcode 60mL
33-400 Wide Mouth Amber
Glass Bottle 44.5x75.5mm.



Description
Barcode 120mL
38-400 Wide Mouth Amber
Glass Bottle 52.8x95mm.



Description
Barcode 250mL
45-400 Wide Mouth Amber
Glass Bottle 64x119mm.



Description
Barcode 500mL
53-400 Wide Mouth Amber
Glass Bottle 80.6x146.5mm.

Unichrome[®] Associates

Dealers in all types of laboratory equipments & consumables

Screw Headspace ND18

- Pre-assembling vial+closure service is available upon request.
- The magnetic screw caps can be used for headspace as well as for SPME.
- Type of Cap: Magnetic Precision screw cap, Closed Precision screw cap.



10mL
Clear Glass
Screw Headspace Vial
22.5x46mm.



10mL
Amber Glass
Screw Headspace Vial
22.5x46mm.



20mL
Clear Glass
Screw Headspace Vial
22.5x75mm.



20mL
Amber Glass
Screw Headspace Vial
22.5x75mm.



18mm
Silver Color
Open Top
Metal Cap.



18mm
Silver Color
Closed Top
Metal Cap.

Description



18mm
Silver Color
Open Top Metal Cap (8mm hole)
with 17.5mm Blue PTFE/White Silicone
Septa 1.5mm Thick.



18mm
Silver Color
Closed Top Metal Cap
with Blue PTFE/White Silicone
Septa 1.5mm Thick.



Blue PTFE/White Silicone
Septa 1.5mm thick.



Red PTFE/White Silicone
Septa 1.5mm Thick.

(used for 18mm magnetic screw cap).

Description

>ND18 Pre-assembled



10mL Clear Glass
Screw Headspace Vial 22.5x46mm
18mm Silver Color Open Top Metal Cap (8mm hole)
with 17.5mm Blue PTFE/White Silicone
Septa 1.5mm Thick
Vial Cap Septa are pre-assembled together.



20mL Clear Glass
Screw Headspace Vial 22.5x75mm
18mm Silver Color Open Top Metal Cap (8mm hole)
with 17.5mm Blue PTFE/White Silicone
Septa 1.5mm Thick
Vial Cap Septa are pre-assembled together.



Description

Unichrome[®] Associates

Dealers in all types of laboratory equipments & consumables



Description

20mm
Open Top
Aluminum Crimp Cap (10mm hole)
with 20mm White PTFE/Blue Silicone
Septa 3mm Thick.



20mm
Open Top
Aluminum Crimp Cap (10mm hole)
with 20mm Red PTFE/White Silicone
Septa 3mm Thick.



20mm
Open Top
Aluminum Crimp Cap (10mm hole)
with 20mm Natural PTFE/Natural Silicone
Septa 3mm Thick.



Description

20mm
Open Top
Bi-Metallic Crimp Cap (8mm hole)
Blue & Silver with 20mm Natural
PTFE/White Silicone Septa 3mm Thick.



20mm
Open Top
Bi-Metallic Crimp Cap (8mm hole)
Blue & Silver with 20mm Natural
PTFE/Natural Silicone Septa 3mm Thick.



20mm
Open Top
Bi-Metallic Crimp Cap (8mm hole)
Red & Silver with 20mm Natural
PTFE/Natural Silicone Septa 3mm Thick.



Description

20mm
Open Top
Gold Magnetic Crimp Cap (10mm hole)
with 20mm Natural PTFE/White Silicone
Septa 3mm Thick.



20mm
Open Top
Gold Magnetic Crimp Cap (10mm hole)
with 20mm White PTFE/Blue Silicone
Septa 3mm Thick.



20mm
Open Top
Bi-Metallic Crimp Cap (8mm hole)
Gold & Silver with 20mm Natural
PTFE/Natural Silicone Septa 3mm Thick.



Description

20.2mm
Open Top
Aluminum Crimp Cap (10mm hole)
with Moulded Grey PTFE/Butyl
Septa one ring 3mm Thick.



20.2mm
Open Top
Aluminum Crimp Cap (10mm hole)
with Moulded Pharma-fix-septa
Grey PTFE/Butyl 3mm thick.



20.2mm
Open Top
Aluminum Crimp Cap (pressure release)
with Moulded Grey PTFE/Butyl
Septa one ring 3mm Thick.

> 20mm Butyl Septa



Description

20mm
Moulded Grey
Butyl Injection Stopper.



20mm
Moulded Grey
PTFE/Butyl
Septa one ring
3mm thick.



20mm
Moulded Grey
Butyl Septa one ring.
3mm thick.



20mm
Moulded Grey
Butyl Septa
both rings.



20mm
Grey PTFE/Butyl
without ring.
3mm thick.



20mm
Moulded
Pharma-fix-septa
Grey PTFE/Butyl
3mm thick.

Unichrome[®] Associates

Dealers in all types of laboratory equipments & consumables

Crimper & Decrimper



Description
Crimper for
11mm Aluminum
Crimp Cap.
Stainless Steel.



Crimper for
20mm Aluminum
Crimp Cap.
Stainless Steel.



Stainless Steel
Crimper
for 13mm
Flip off Cap.



Decrimper for
11mm Aluminum
Crimp Cap.
Stainless Steel.

Stainless Steel
Crimper
for 20mm
Flip off Cap.

Decrimper for
20mm Aluminum
Crimp Cap.
Stainless Steel.

Decrimper for
11mm/20mm
Crimp Cap
(Plier Type).



MOISTURE BALANCE



SPE MANUFOLD



MAGNETIC RING



U VIAL



WEIGHING BOAT



SUCTION FILTER
for WATERS



SUCTION FILTER
for SHIMADZU



SUCTION FILTER
for AGILENT



PTFE FRITS
for AGILENT



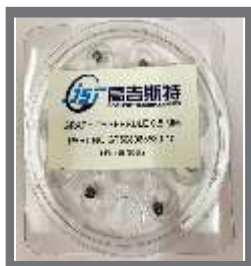
MOISTURE PAN



DISSOLUTION FILTER
SS



DISSOLUTION FILTER
DISPOSABLE



GRAPHITE FERRULES



GRAPHITE FERRULES



GRAPHITE FERRULES



HPLC COLUMN END PLUGS

Aluminum Moisture Analyzer /Weighing Pans

Moisture Analyzer Consumable

Weighing pan, is ideal for general-purpose weighing, dispensing, sampling, drying and storage, balances and moisture analyzers. Made from light gauge aluminum, no coating and is oil -free, compatible with both open and enclosed balances.



96-well Deep Well Plates

Nonpyrogenic and DNase-/RNase-free



96-well Deep Well Plates

Deep well a plates are used for sample collection, in vitro growth chambers and long-term storage. made of polypropylene, they offer excellent chemical resistance and will withstand temperatures down to -80°C. One set of pierceable sealing films, aluminum-based, self-adhesive.

Unichrome[®] **A**ssociates

Dealers in all types of laboratory equipments & consumables

B-701, D3 - Sattelite Gardens, Phase II, Filmcity Road, Gokuldham, Goregaon (E) Mumbai - 400 063.

Mob.: 9821383939 / 9324748821

Email : info@unichromeassociates.com • Website: www.unichromeassociates.com



An ISO 9001:2008 Certified Co.